

---

# Assembling and User Manual

--ATV Towable Backhoe ATBH9/135

**Parameters:**

**Model: ATBH9/ATBH135**

**Name: Towable Backhoe Excavator**

**Engine: 9HP/13.5HP/15HP      Band: B&S or JD**

**Fuel: Gasoline**

**Hydraulic oil: 46#**

**Digging Depth: 2400MM**

SPECIFICATIONS FOR MINI TOWABLE BACKHOE		
Engine	Engine Power	9hp or 15hp or 13.5hp
	Stroke	4
	emission approval	EC or EPA
Main performance parameters	Max. Digging Depth	2400mm
	Max. Digging Radius	2800mm
	Max. Digging Height	2500mm
	Max. Unloading Height	1200mm
Bucket	Bucket Turning Angle	160 degree
	Bucket Capacity	0.036m <sup>3</sup>
	Bucket Width	220mm/300mm/400mm/500mm,600mm
Hydraulic	Pump	Double Speed Gear Pump

## Assembling

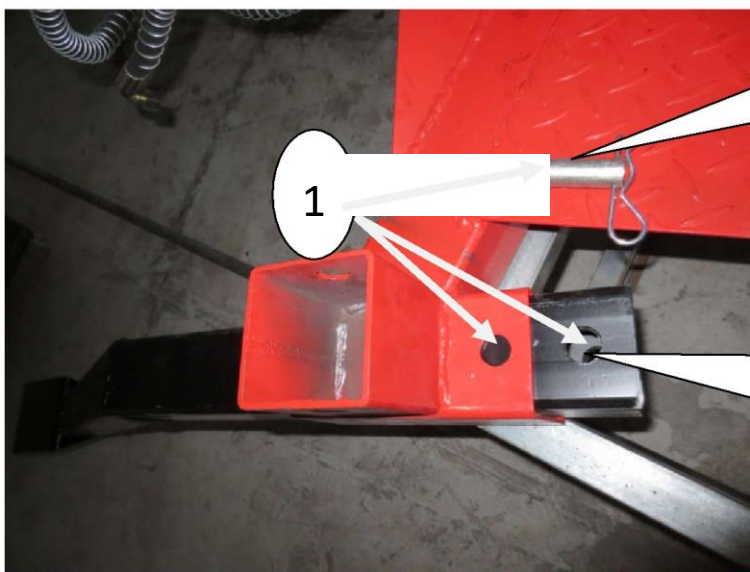
**In the need of shipping safely, many parts this machine is disassembled before shipping. So you have to assemble several parts when you have received this machine.**

## Index

1、	Legs and wheels assembling-----	1~3
2、	Excavator Main Arm assembling -----	3
3、	Bucket Arm assembling-----	4
4、	Bucket assembling -----	4
5、	Hydraulic cylinder assembling -----	5
6、	Towing Ball assembling -----	6
7、	Fuel and Hydraulic oil filling-----	6
8、	Several different configuration -----	
9、	Maintenance -----	7
10、	Parts List and service-----	7~8
11、	Operations need to be avoid-----	

### 1、 Legs and wheels assembling:

Lift the body of the machine and insert the legs and the two wheels, after which the 20\*100mm Pin could be used to fix the parts together.



20\*100mm  
Pin

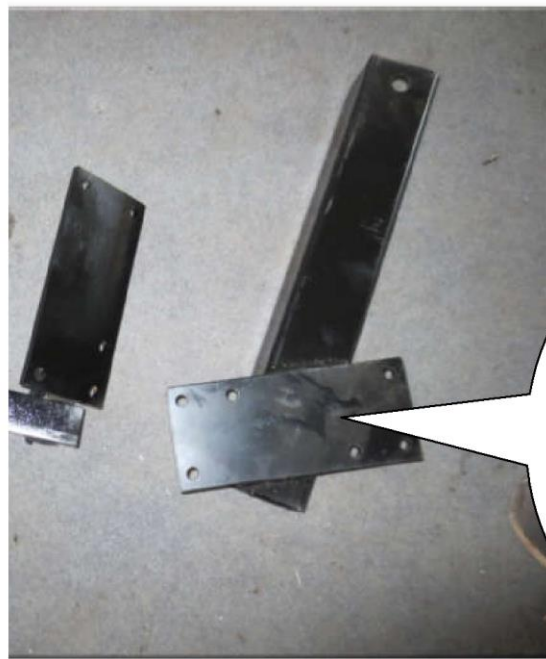
As Shown in  
figure



Fixed



As Shown  
in figure

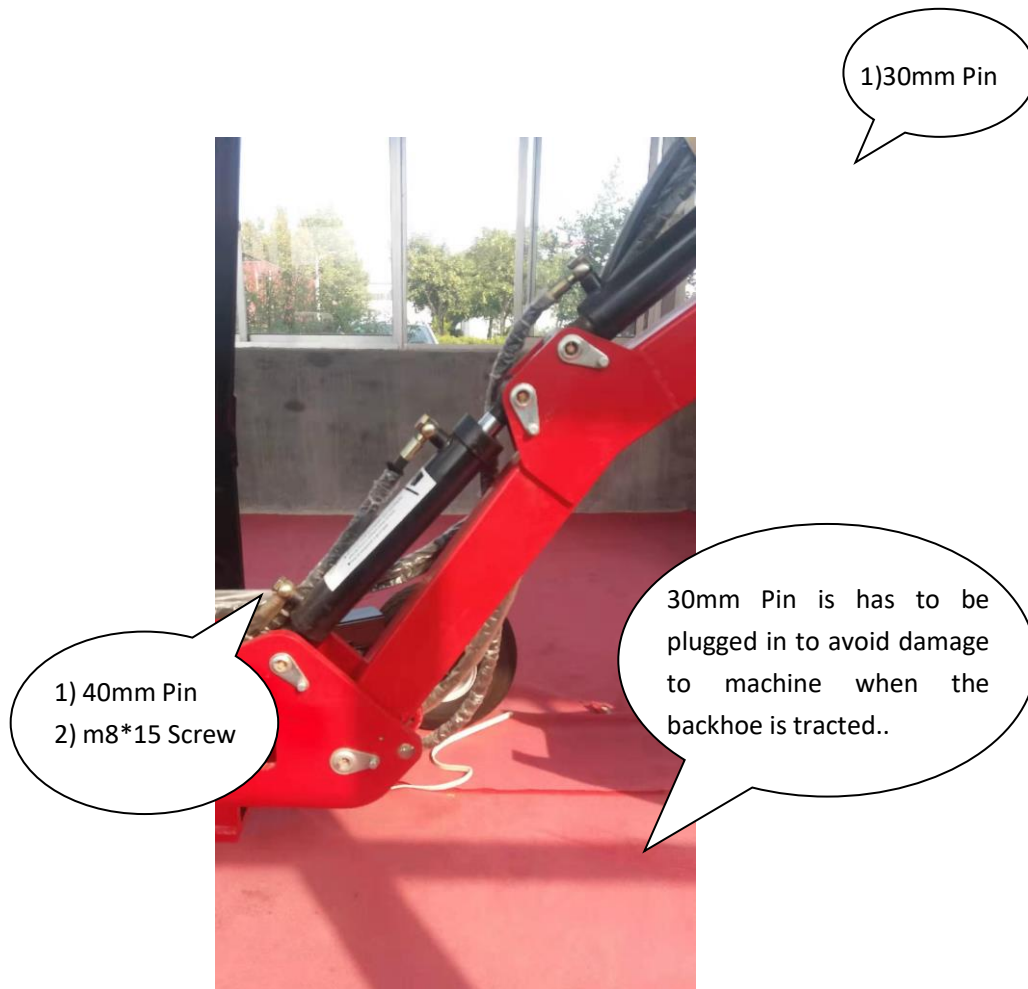


Left and  
Right  
Wheels

---

## 2、 Excavator Main Arm assembling

Assemble the parts as shown below.



### 3、 Bucket Arm assembling

Assemble the parts as shown below.

Use 30mm Pin 40mm Pin and M8\*15 screw to set up the parts.



### 4、 Bucket assembling

Assemble the parts as shown below.

- 1) L size part
- 2) connector
- 3) Bucket
- 4) 30mm Pin Steel ring

5) 30mm inside diameter



5) Steel ring (with 30mm inside diameter) is put here to keep the limit



## 5、 Hydraulic cylindder assembling

Assemble the parts as shown below.

There are four pairs of Hydraulic pipe which is used to control four Hydraulic cylinders. One pair has to be connected to one Hydraulic cylinders, one pipe send in the oil the other floww away oil, its very easy to understand.



Steel ring \*2

1#  
Oil  
back  
port

Oil front port



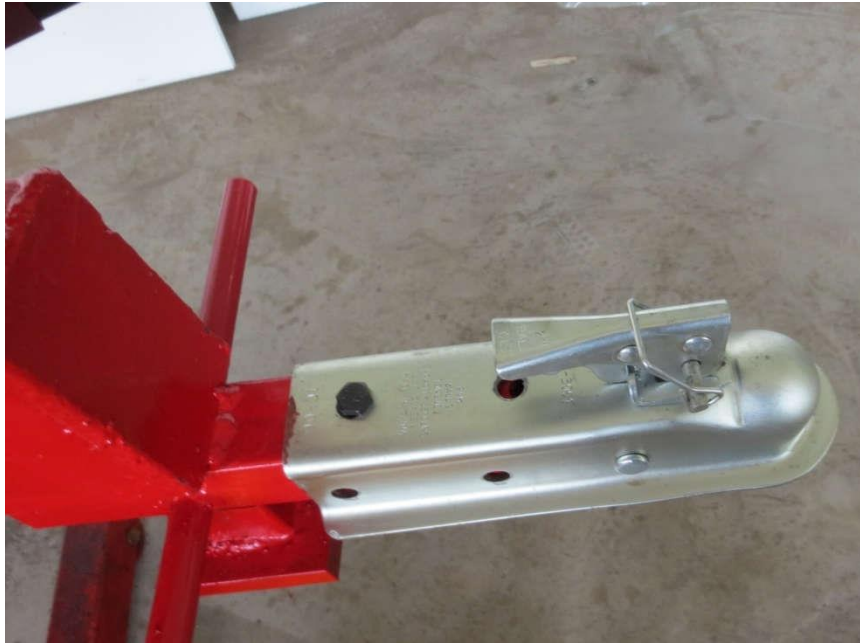
Steel ring is very important, do not forget this small part.

---

## 6、 Towing Ball assembling

Assemble the parts as shown below.

All parts need to be installed, so no problem will happen.



7、

## Fuel and Hydraulic oil filling

There are two type of Seats for gasoline engine machine.



Air hole has to be opened when hydraulic oil is been filling. And close it when filling is done.

hydraulic oil entry

---

## 8、 Several different configuration



This type of seat is available only on Gasoline engine machines. Diesel engine machine does not have this type of seats



---

→ Diesel engine could have the configuration of start battery and electrical systems(it cost 180\$), 80A/12V battery is been employed.



→ Two control stick with four control stick could be used (cost 50\$), which could lead to higher efficiency when work with this backhoe.

## 9、 Notices and Maintenance

- 1、 Install the Bottom Hydraulic cylinder which is used to turn last, because this could help make the installing process easy.
- 2、 Install Hydraulic cylinder before install the parts of the main digging arm, otherwise without the help of hydraulic cylinder it is not easy to lift the parts of the main digging arm.